



# Erasmus+

---

## Online Linguistic Support

# Erasmus+ Online Linguistic Support Statistical Report for National Agencies

---

Agence francophone  
pour l'éducation et la formation tout au long de la vie - AEF -Europe - BE01

October 2014 to Date

Higher Education

Reporting Period: 30/09/2014 to 31/08/2018

September 2018

Disclaimer: This document has been prepared on behalf of the European Commission; however, it reflects only the views of the authors. The Commission will not be held responsible for any of the information contained herein.

Initially, six languages (German, English, Spanish, French, Italian, and Dutch) were introduced. They are referred to as the A languages. Further 18 languages were introduced in sets of six with the calls 2016, 2017, and 2018 and are referred to as the B, C, and D languages respectively in the remainder of this report. The details of these language groups are given in the list of abbreviations.

For further information, National Agencies shall contact [EACEA-EPLUS-OLS@ec.europa.eu](mailto:EACEA-EPLUS-OLS@ec.europa.eu).

# Contents

<b>I. Erasmus+ OLS Usage</b>	<b>3</b>
1. OLS Accounted and Effective Usage . . . . .	3
2. OLS Usage per Month . . . . .	4
3. Total OLS Usage per language . . . . .	6
4. OLS Usage by Language and Destination Country . . . . .	7
<b>II. Results of Erasmus+ OLS Language Assessments</b>	<b>9</b>
1. OLS Results for the First Language Assessment . . . . .	9
2. OLS Results for the Second Language Assessment . . . . .	10
3. Comparison of OLS Results for the First and Second Language Assessment . . . . .	11
<b>III. Erasmus+ OLS Language Courses</b>	<b>14</b>
1. Usage of OLS Language Courses by Language . . . . .	14
2. Usage of OLS Language Courses by LA1 level . . . . .	17
3. Usage of OLS Language Courses by Mobility Duration . . . . .	18
4. Usage of OLS Language Courses by Starting Time . . . . .	19
5. Main Language vs Local Language . . . . .	20
<b>IV. Erasmus+ OLS Dashboard</b>	<b>21</b>
<b>V. Glossary of Specific Terminology Used in this Statistical Report</b>	<b>22</b>
<b>VI. Abbreviations Used in the Framework of the Erasmus+ OLS</b>	<b>22</b>
<b>VII. CEFR Levels</b>	<b>23</b>

## I. Erasmus+ OLS Usage

### 1. OLS Accounted and Effective Usage

This table has two parts, left and right, which summarize license and effective usage of assessments and courses.

The left part shows how many participants used (started) assessments or language courses, how many of them completed the assessments or actively worked with the language courses, and the percentages of participants who did not complete their assessments or who did not use their courses actively.

The right part shows percentages (intake) of language assessment 2 or language courses with respect to assessment 1.

**Table 1.** OLS effective usage: intake of language assessment 2 and courses

	Assessment 1	Assessment 2	Course	Intake of Assessment 2	Intake of Courses
Total	12.482	9.090	4.514	72,8 %	36,2 %
Completed LAs/ Activated LCs	12.316	9.000	4.385	73,1 %	35,6 %
% not Completed or Activated/Total	1,3 %	1,0 %	2,9 %		

## 2. OLS Usage per Month

The following graph and table give an overview on how many language assessments and courses have been used per month. The numbers represent the number of participants who have started the OLS language assessments and/ or have accessed the OLS language courses.

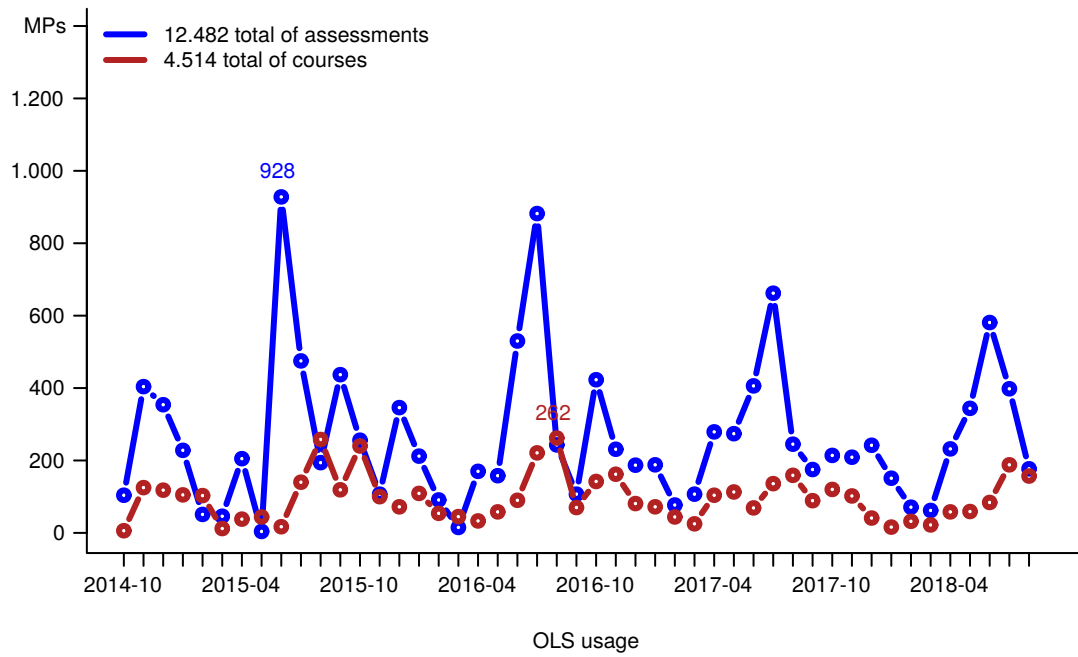


Figure 1. OLS usage per month. Numbers are only indicated for the peaks of the OLS usage curves.

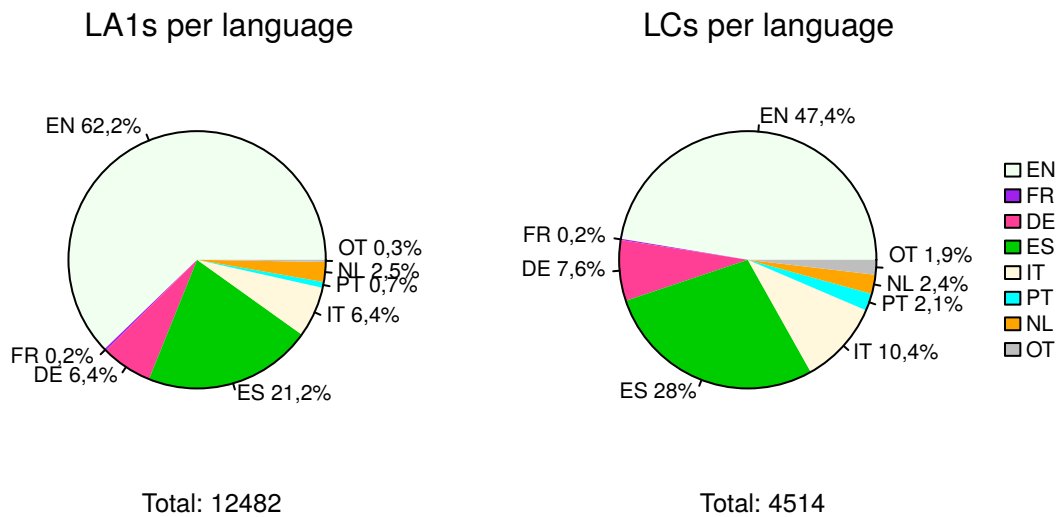
**Table 2. OLS usage per month**

	Total assess. 1	Cumulative assess. 1	Total assess. 2	Cumulative assess. 2	Total course	Cumulative course	Cumulative intake course/assess. 1
2014-10	104	104	0	0	6	6	5,8%
2014-11	404	508	0	0	125	131	25,8%
2014-12	354	862	18	18	118	249	28,9%
2015-01	228	1.090	18	36	105	354	32,5%
2015-02	51	1.141	22	58	103	457	40,1%
2015-03	46	1.187	33	91	12	469	39,5%
2015-04	205	1.392	67	158	38	507	36,4%
2015-05	4	1.396	235	393	44	551	39,5%
2015-06	928	2.324	408	801	17	568	24,4%
2015-07	475	2.799	170	971	140	708	25,3%
2015-08	194	2.993	30	1.001	258	966	32,3%
2015-09	437	3.430	25	1.026	119	1.085	31,6%
2015-10	256	3.686	9	1.035	240	1.325	35,9%
2015-11	107	3.793	31	1.066	100	1.425	37,6%
2015-12	346	4.139	404	1.470	72	1.497	36,2%
2016-01	212	4.351	639	2.109	109	1.606	36,9%
2016-02	91	4.442	422	2.531	54	1.660	37,4%
2016-03	15	4.457	56	2.587	45	1.705	38,3%
2016-04	170	4.627	86	2.673	33	1.738	37,6%
2016-05	158	4.785	260	2.933	58	1.796	37,5%
2016-06	530	5.315	676	3.609	90	1.886	35,5%
2016-07	882	6.197	255	3.864	221	2.107	34,0%
2016-08	243	6.440	75	3.939	262	2.369	36,8%
2016-09	107	6.547	39	3.978	70	2.439	37,3%
2016-10	423	6.970	15	3.993	142	2.581	37,0%
2016-11	231	7.201	7	4.000	162	2.743	38,1%
2016-12	187	7.388	352	4.352	81	2.824	38,2%
2017-01	188	7.576	574	4.926	72	2.896	38,2%
2017-02	77	7.653	472	5.398	44	2.940	38,4%
2017-03	107	7.760	82	5.480	25	2.965	38,2%
2017-04	279	8.039	105	5.585	104	3.069	38,2%
2017-05	274	8.313	279	5.864	113	3.182	38,3%
2017-06	406	8.719	648	6.512	69	3.251	37,3%
2017-07	662	9.381	236	6.748	136	3.387	36,1%
2017-08	245	9.626	68	6.816	159	3.546	36,8%
2017-09	175	9.801	25	6.841	89	3.635	37,1%
2017-10	214	10.015	15	6.856	120	3.755	37,5%
2017-11	209	10.224	11	6.867	102	3.857	37,7%
2017-12	242	10.466	228	7.095	41	3.898	37,2%
2018-01	151	10.617	528	7.623	16	3.914	36,9%
2018-02	71	10.688	365	7.988	32	3.946	36,9%
2018-03	62	10.750	51	8.039	22	3.968	36,9%
2018-04	232	10.982	67	8.106	58	4.026	36,7%
2018-05	344	11.326	218	8.324	59	4.085	36,1%
2018-06	581	11.907	488	8.812	84	4.169	35,0%
2018-07	398	12.305	216	9.028	188	4.357	35,4%
2018-08	177	12.482	62	9.090	157	4.514	36,2%

### 3. Total OLS Usage per language

**Table 3.** Usage of OLS Language Assessment 1 (LA1), language courses (LC) and course intake (LC/LA1) by language

	Assessment 1	Course	Course intake
DE	804	344	43 %
EN	7.765	2.139	28 %
ES	2.649	1.263	48 %
FR	31	7	23 %
IT	797	471	59 %
NL	312	109	35 %
CS	2	11	550 %
DA	15	16	107 %
EL	4	1	25 %
PL	2	9	450 %
PT	90	97	108 %
SV	3	28	933 %
BG	0	0	.
FI	2	10	500 %
HU	3	4	133 %
RO	2	2	100 %
SK	0	0	.
HR	1	2	200 %
ET	0	0	.
GA	0	0	.
LV	0	0	.
LT	0	0	.
MT	0	0	.
SL	0	1	.
total	12.482	4.514	36 %



**Figure 2.** OLS usage for assessment 1 by language (left) and OLS usage for courses per language (right)

#### 4. OLS Usage by Language and Destination Country

The following tables give the detail of OLS language use by destination country (assessment 1 only).

**Table 4.** A and B languages. Assessment 1 usage per language (columns) by destination country (rows). Dots indicate values below 1%.

	LA Total	DE	EN	ES	FR	IT	NL	CS	DA	EL	PL	PT	SV
BE	291	2%	53%	19%	1%	7%	19%						
BG	56		98%	2%									
CZ	276	.	99%					1%					
DK	298		95%						5%				
DE	904	70%	30%		.								
EE	74		100%										
IE	456		100%										
EL	77		95%							5%			
ES	2.955		13%	87%				.					
FR	241	1%	88%	2%	10%								
HR	53		96%	2%									
IT	1.206	.	35%	.		64%							
CY	99		98%	1%		1%							
LV	50		100%										
LT	111		100%										
LU	220	2%	96%		2%								
HU	226		99%										
MT	114		100%										
NL	772		67%				33%						
AT	280	51%	49%										
PL	257	1%	98%								1%		
PT	457		80%	.								20%	
RO	85		96%				1%						
SI	66		100%										
SK	45		100%										
FI	471		99%					.					
SE	454		99%										
UK	1.295	.	100%	.									1%
TR	123		100%										
LI		.	.	.	.	.	.	.	.	.	.	.	.
IS	18		100%										
MK		.	.	.	.	.	.	.	.	.	.	.	.
NO	296		100%										
other	156	6%	75%	16%	1%	1%	1%						

**Table 5.** C and D languages. Assessment 1 usage per language (columns) by destination country (rows). Dots indicate values below 1%.

	LA Total	BG	FI	HU	RO	SK	HR	ET	GA	LV	LT	MT	SL
BE	291												
BG	56												
CZ	276												
DK	298												
DE	904												
EE	74												
IE	456												
EL	77												
ES	2.955												
FR	241												
HR	53						2%						
IT	1.206												
CY	99												
LV	50												
LT	111												
LU	220												
HU	226			1%									
MT	114												
NL	772												
AT	280												
PL	257												
PT	457												
RO	85				2%								
SI	66												
SK	45												
FI	471												
SE	454												
UK	1.295												
TR	123												
LI		.	.	.	.	.	.	.	.	.	.	.	.
IS	18												
MK		.	.	.	.	.	.	.	.	.	.	.	.
NO	296												
other	156												

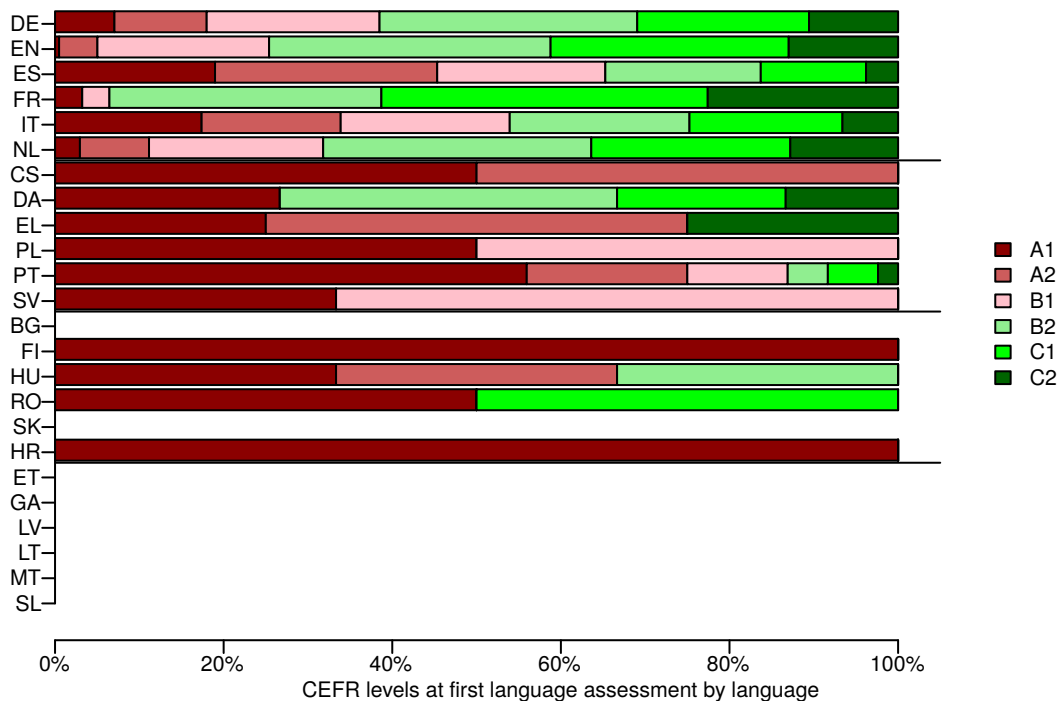


## II. Results of Erasmus+ OLS Language Assessments

### 1. OLS Results for the First Language Assessment

**Table 6.** Participants' results of completed language assessment 1 per language per CEFR level

	A1	A2	B1	B2	C1	C2	Total LA1 per language
DE	7,0%	10,9%	20,5%	30,6%	20,4%	10,6%	795
EN	0,5%	4,5%	20,4%	33,4%	28,2%	13,0%	7.676
ES	19,0%	26,4%	19,9%	18,4%	12,5%	3,8%	2.603
FR	3,2%	0,0%	3,2%	32,3%	38,7%	22,6%	31
IT	17,4%	16,5%	20,1%	21,3%	18,1%	6,6%	788
NL	3,0%	8,2%	20,7%	31,8%	23,6%	12,8%	305
CS	50,0%	50,0%	0,0%	0,0%	0,0%	0,0%	2
DA	26,7%	0,0%	0,0%	40,0%	20,0%	13,3%	15
EL	25,0%	50,0%	0,0%	0,0%	0,0%	25,0%	4
PL	50,0%	0,0%	50,0%	0,0%	0,0%	0,0%	2
PT	56,0%	19,0%	11,9%	4,8%	6,0%	2,4%	84
SV	33,3%	0,0%	66,7%	0,0%	0,0%	0,0%	3
BG	.	.	.	.	.	.	0
FI	100,0%	0,0%	0,0%	0,0%	0,0%	0,0%	2
HU	33,3%	33,3%	0,0%	33,3%	0,0%	0,0%	3
RO	50,0%	0,0%	0,0%	0,0%	50,0%	0,0%	2
SK	.	.	.	.	.	.	0
HR	100,0%	0,0%	0,0%	0,0%	0,0%	0,0%	1
ET	.	.	.	.	.	.	0
GA	.	.	.	.	.	.	0
LV	.	.	.	.	.	.	0
LT	.	.	.	.	.	.	0
MT	.	.	.	.	.	.	0
SL	.	.	.	.	.	.	0
Total LA1 per CEFR level	794	1.297	2.480	3.572	2.891	1.282	12.316



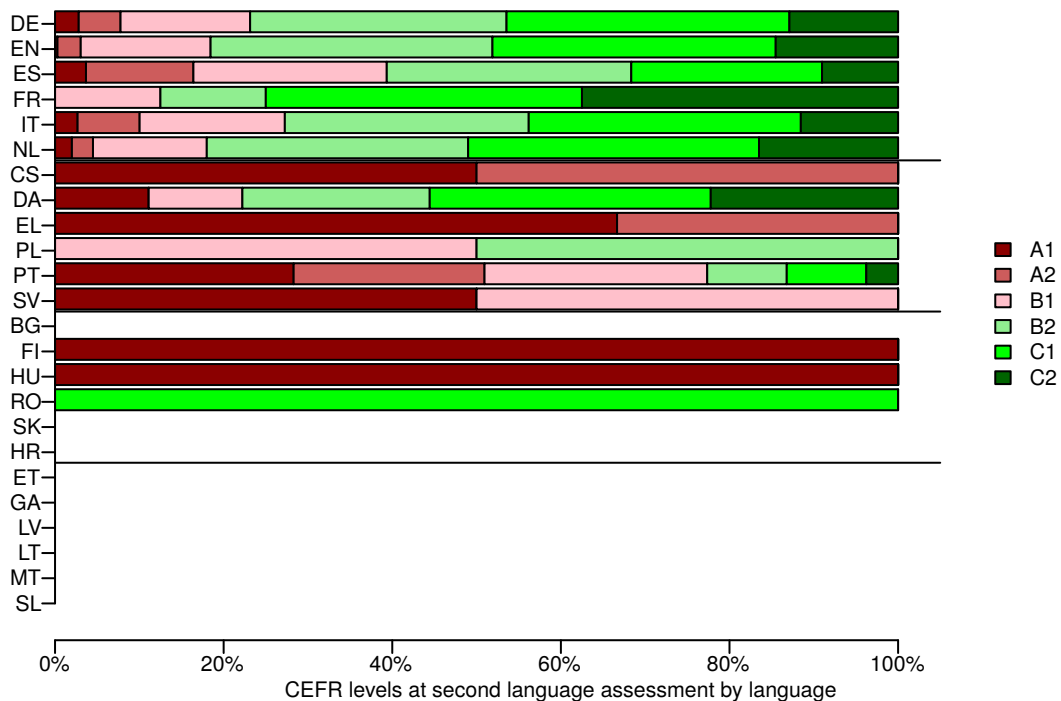
**Figure 3.** Distribution of CEFR levels of completed language assessment 1

## 2. OLS Results for the Second Language Assessment

This table gives an overview of participants' results on completed language assessment 2 per language and per CEFR level.

**Table 7.** Participants' results of language assessment 2 per language per CEFR level

	A1	A2	B1	B2	C1	C2	Total LA2 per language
DE	2,8%	5,0%	15,4%	30,4%	33,6%	12,9%	605
EN	0,3%	2,8%	15,4%	33,4%	33,6%	14,5%	5.545
ES	3,7%	12,7%	22,9%	29,0%	22,6%	9,0%	1.962
FR	0,0%	0,0%	12,5%	12,5%	37,5%	37,5%	16
IT	2,7%	7,4%	17,2%	28,9%	32,3%	11,5%	598
NL	2,0%	2,5%	13,5%	31,0%	34,5%	16,5%	200
CS	50,0%	50,0%	0,0%	0,0%	0,0%	0,0%	2
DA	11,1%	0,0%	11,1%	22,2%	33,3%	22,2%	9
EL	66,7%	33,3%	0,0%	0,0%	0,0%	0,0%	3
PL	0,0%	0,0%	50,0%	50,0%	0,0%	0,0%	2
PT	28,3%	22,6%	26,4%	9,4%	9,4%	3,8%	53
SV	50,0%	0,0%	50,0%	0,0%	0,0%	0,0%	2
BG	.	.	.	.	.	.	0
FI	100,0%	0,0%	0,0%	0,0%	0,0%	0,0%	1
HU	100,0%	0,0%	0,0%	0,0%	0,0%	0,0%	1
RO	0,0%	0,0%	0,0%	0,0%	100,0%	0,0%	1
SK	.	.	.	.	.	.	0
HR	.	.	.	.	.	.	0
ET	.	.	.	.	.	.	0
GA	.	.	.	.	.	.	0
LV	.	.	.	.	.	.	0
LT	.	.	.	.	.	.	0
MT	.	.	.	.	.	.	0
SL	.	.	.	.	.	.	0
Total LA2 per CEFR level	147	496	1.546	2.852	2.787	1.172	9.000



**Figure 4.** Distribution of CEFR levels of completed language assessment 2

### 3. Comparison of OLS Results for the First and Second Language Assessment

The following tables compare mobility participants' results according to the CEFR across completed language assessments 1 and completed language assessments 2.

**Table 8.** Distribution of assessment results by CEFR level for those participants having completed language assessment 1 and language assessment 2. Total and A and B languages

	A1	A2	B1	B2	C1	C2	A2 and less	B1 and less	B2 and more
all LA1	5,8%	10,8%	20,5%	29,9%	25,0%	7,9%	16,6%	37,1%	62,9%
all LA2	1,1%	5,4%	17,2%	31,9%	31,3%	13,1%	6,5%	23,7%	76,3%
DE LA1	5,1%	11,2%	22,0%	31,5%	21,5%	8,6%	16,3%	38,3%	61,7%
DE LA2	1,5%	4,4%	15,8%	30,7%	34,4%	13,2%	5,9%	21,7%	78,3%
EN LA1	0,4%	4,6%	20,6%	34,5%	30,0%	10,0%	4,9%	25,5%	74,5%
EN LA2	0,2%	2,7%	15,4%	33,5%	33,6%	14,5%	3,0%	18,3%	81,7%
ES LA1	17,3%	27,1%	20,2%	18,7%	14,2%	2,6%	44,3%	64,5%	35,5%
ES LA2	2,5%	12,5%	23,0%	29,6%	23,1%	9,2%	15,0%	38,0%	62,0%
FR LA1	6,2%	0,0%	6,2%	43,8%	31,2%	12,5%	6,2%	12,5%	87,5%
FR LA2	0,0%	0,0%	12,5%	12,5%	37,5%	37,5%	0,0%	12,5%	87,5%
IT LA1	17,3%	17,3%	20,6%	22,0%	19,1%	3,7%	34,5%	55,2%	44,8%
IT LA2	2,4%	7,1%	17,3%	28,9%	32,7%	11,7%	9,5%	26,7%	73,3%
NL LA1	2,5%	6,5%	21,1%	35,7%	25,1%	9,0%	9,0%	30,2%	69,8%
NL LA2	1,5%	2,5%	13,6%	31,2%	34,7%	16,6%	4,0%	17,6%	82,4%
CS LA1	0%	100%	0%	0%	0%	0%	100%	100%	0%
CS LA2	0%	100%	0%	0%	0%	0%	100%	100%	0%
DA LA1	22,2%	0,0%	0,0%	55,6%	11,1%	11,1%	22,2%	22,2%	77,8%
DA LA2	11,1%	0,0%	11,1%	22,2%	33,3%	22,2%	11,1%	22,2%	77,8%
EL LA1	33,3%	66,7%	0,0%	0,0%	0,0%	0,0%	100,0%	100,0%	0,0%
EL LA2	66,7%	33,3%	0,0%	0,0%	0,0%	0,0%	100,0%	100,0%	0,0%
PL LA1	0%	0%	100%	0%	0%	0%	0%	100%	0%
PL LA2	0%	0%	100%	0%	0%	0%	0%	100%	0%
PT LA1	45,5%	25,0%	13,6%	4,5%	6,8%	4,5%	70,5%	84,1%	15,9%
PT LA2	22,7%	22,7%	29,5%	11,4%	9,1%	4,5%	45,5%	75,0%	25,0%
SV LA1	0%	0%	100%	0%	0%	0%	0%	100%	0%
SV LA2	0%	0%	100%	0%	0%	0%	0%	100%	0%

**Table 9.** Distribution of assessment results by CEFR level for those participants having completed language assessment 1 and language assessment 2. C and D languages

	A1	A2	B1	B2	C1	C2	A2 and less	B1 and less	B2 and more
BG LA1	.	.	.	.	.	.	.	.	.
BG LA2	.	.	.	.	.	.	.	.	.
FI LA1	100%	0%	0%	0%	0%	0%	100%	100%	0%
FI LA2	100%	0%	0%	0%	0%	0%	100%	100%	0%
HU LA1	100%	0%	0%	0%	0%	0%	100%	100%	0%
HU LA2	100%	0%	0%	0%	0%	0%	100%	100%	0%
RO LA1	0%	0%	0%	0%	100%	0%	0%	0%	100%
RO LA2	0%	0%	0%	0%	100%	0%	0%	0%	100%
SK LA1	.	.	.	.	.	.	.	.	.
SK LA2	.	.	.	.	.	.	.	.	.
HR LA1	.	.	.	.	.	.	.	.	.
HR LA2	.	.	.	.	.	.	.	.	.
ET LA1	.	.	.	.	.	.	.	.	.
ET LA2	.	.	.	.	.	.	.	.	.
GA LA1	.	.	.	.	.	.	.	.	.
GA LA2	.	.	.	.	.	.	.	.	.
LV LA1	.	.	.	.	.	.	.	.	.
LV LA2	.	.	.	.	.	.	.	.	.
LT LA1	.	.	.	.	.	.	.	.	.
LT LA2	.	.	.	.	.	.	.	.	.
MT LA1	.	.	.	.	.	.	.	.	.
MT LA2	.	.	.	.	.	.	.	.	.
SL LA1	.	.	.	.	.	.	.	.	.
SL LA2	.	.	.	.	.	.	.	.	.

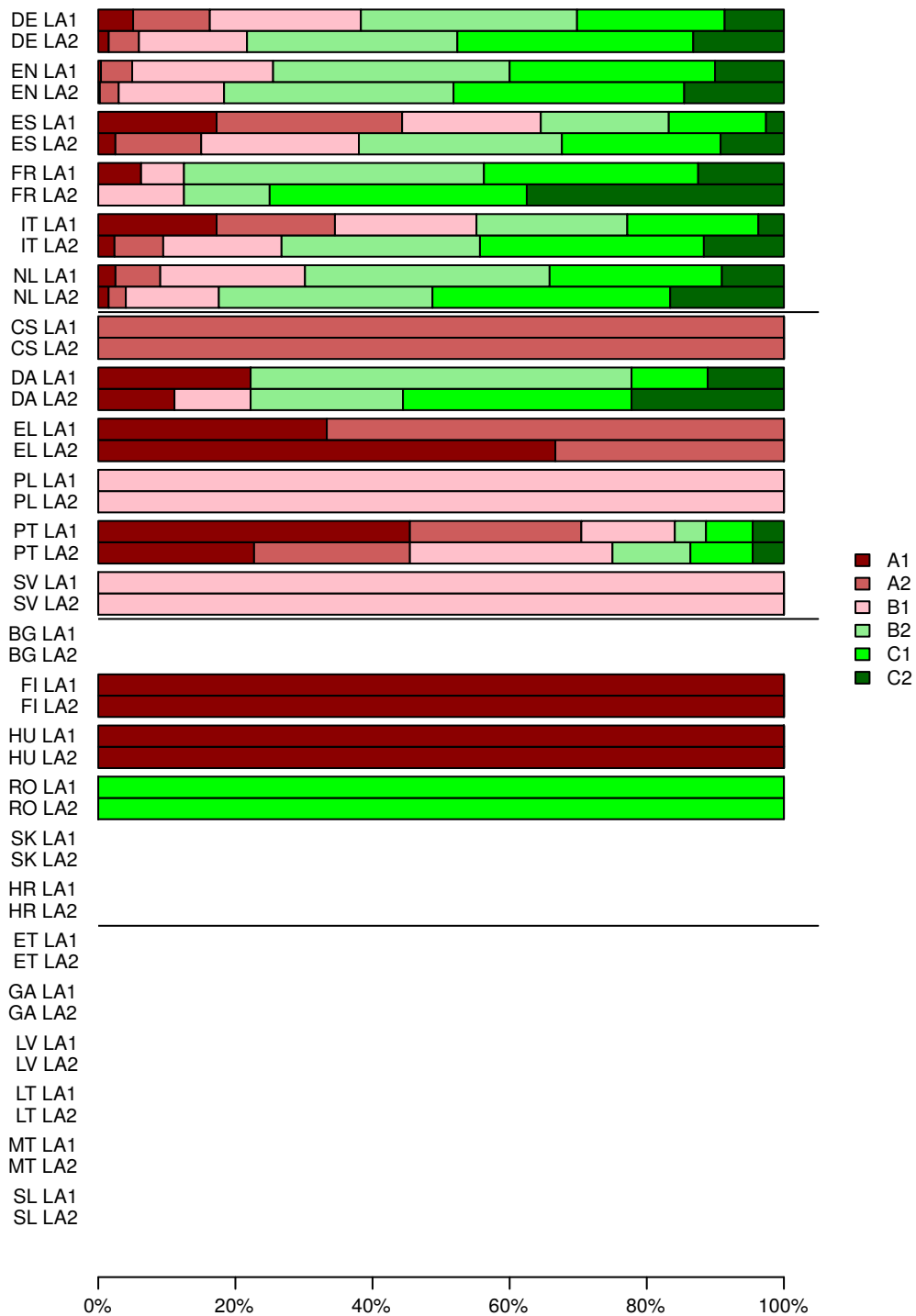


Figure 5. Distribution of levels at LA1 and LA2 for all participants who completed both assessments.

### III. Erasmus+ OLS Language Courses

#### 1. Usage of OLS Language Courses by Language

The following table gives an overview of participants' active usage of the language course. The categories represent the number of hours during which activity was registered on the OLS language platform.

**Table 10.** Usage of activated OLS language courses, total and A and B languages

		Total	0h	below 1h	1h to 10h	10h to 30h	more than 30h
All	Mobility Participants	4.514	0	2.438	1.557	318	72
	%	100,0%	0,0%	54,0%	34,5%	7,0%	1,6%
DE	Mobility Participants	334	0	179	123	26	6
	%	100,0%	0,0%	53,6%	36,8%	7,8%	1,8%
EN	Mobility Participants	2.065	0	1.268	660	118	19
	%	100,0%	0,0%	61,4%	32,0%	5,7%	0,9%
ES	Mobility Participants	1.237	0	600	478	129	30
	%	100,0%	0,0%	48,5%	38,6%	10,4%	2,4%
FR	Mobility Participants	6	0	5	0	1	0
	%	100,0%	0,0%	83,3%	0,0%	16,7%	0,0%
IT	Mobility Participants	457	0	228	183	31	15
	%	100,0%	0,0%	49,9%	40,0%	6,8%	3,3%
NL	Mobility Participants	105	0	75	26	4	0
	%	100,0%	0,0%	71,4%	24,8%	3,8%	0,0%
CS	Mobility Participants	11	0	4	7	0	0
	%	100,0%	0,0%	36,4%	63,6%	0,0%	0,0%
DA	Mobility Participants	16	0	7	9	0	0
	%	100,0%	0,0%	43,8%	56,2%	0,0%	0,0%
EL	Mobility Participants	1	0	0	1	0	0
	%	100%	0%	0%	100%	0%	0%
PL	Mobility Participants	9	0	4	3	2	0
	%	100,0%	0,0%	44,4%	33,3%	22,2%	0,0%
PT	Mobility Participants	97	0	40	51	5	1
	%	100,0%	0,0%	41,2%	52,6%	5,2%	1,0%
SV	Mobility Participants	28	0	15	11	1	1
	%	100,0%	0,0%	53,6%	39,3%	3,6%	3,6%

**Table 11.** Usage of activated OLS language courses, C and D languages

		Total	0h	below 1h	1h to 10h	10h to 30h	more than 30h
BG	Mobility Participants	0	0	0	0	0	0
	%	.	.	.	.	.	.
FI	Mobility Participants	10	0	6	3	1	0
	%	100%	0%	60%	30%	10%	0%
HU	Mobility Participants	4	0	3	1	0	0
	%	100%	0%	75%	25%	0%	0%
RO	Mobility Participants	2	0	1	1	0	0
	%	100%	0%	50%	50%	0%	0%
SK	Mobility Participants	0	0	0	0	0	0
	%	.	.	.	.	.	.
HR	Mobility Participants	2	0	2	0	0	0
	%	100%	0%	100%	0%	0%	0%
ET	Mobility Participants	0	0	0	0	0	0
	%	.	.	.	.	.	.
GA	Mobility Participants	0	0	0	0	0	0
	%	.	.	.	.	.	.
LV	Mobility Participants	0	0	0	0	0	0
	%	.	.	.	.	.	.
LT	Mobility Participants	0	0	0	0	0	0
	%	.	.	.	.	.	.
MT	Mobility Participants	0	0	0	0	0	0
	%	.	.	.	.	.	.
SL	Mobility Participants	1	0	1	0	0	0
	%	100%	0%	100%	0%	0%	0%

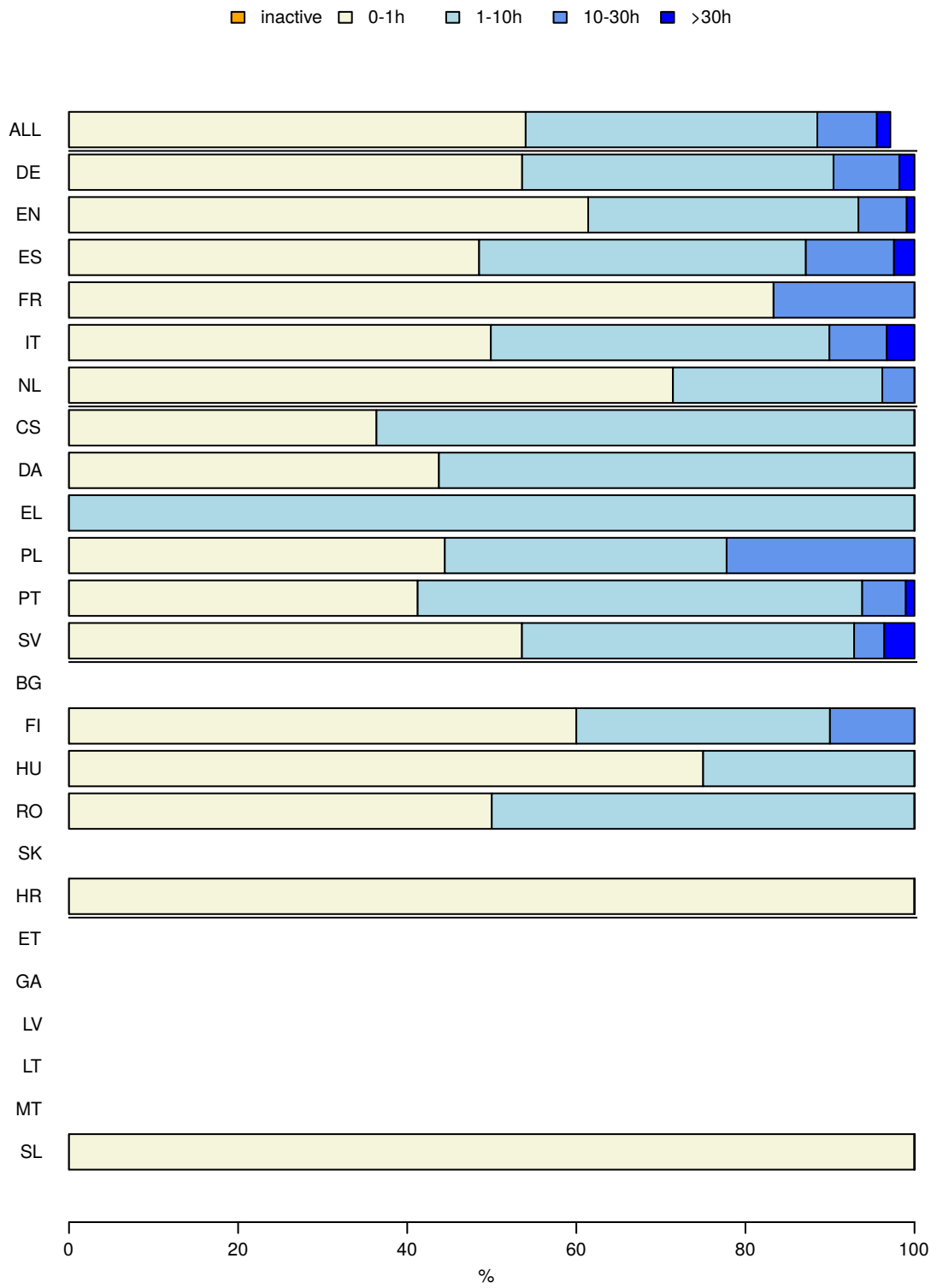


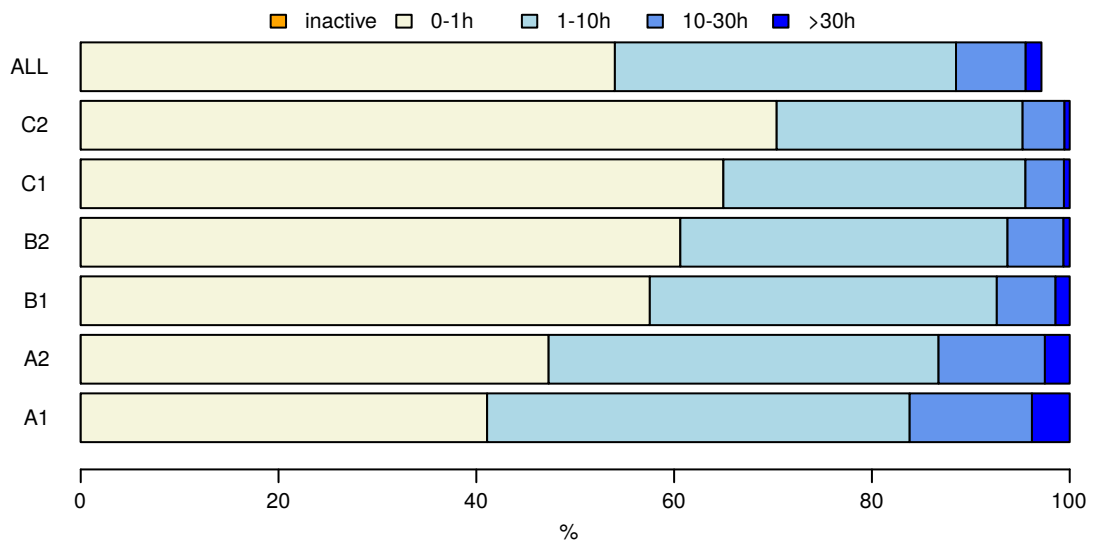
Figure 6. Usage of activated OLS LCs by language



## 2. Usage of OLS Language Courses by LA1 level

**Table 12.** Usage of activated OLS LCs by LA1 level

		Total	0h	below 1h	1h to 10h	10h to 30h	more than 30h
All	Mobility Participants	4.514	0	2.438	1.557	318	72
	%	100,0%	0,0%	54,0%	34,5%	7,0%	1,6%
A1	Mobility Participants	550	0	226	235	68	21
	%	100,0%	0,0%	41,1%	42,7%	12,4%	3,8%
A2	Mobility Participants	837	0	396	330	90	21
	%	100,0%	0,0%	47,3%	39,4%	10,8%	2,5%
B1	Mobility Participants	1.465	0	843	514	87	21
	%	100,0%	0,0%	57,5%	35,1%	5,9%	1,4%
B2	Mobility Participants	795	0	482	263	45	5
	%	100,0%	0,0%	60,6%	33,1%	5,7%	0,6%
C1	Mobility Participants	514	0	334	157	20	3
	%	100,0%	0,0%	65,0%	30,5%	3,9%	0,6%
C2	Mobility Participants	189	0	133	47	8	1
	%	100,0%	0,0%	70,4%	24,9%	4,2%	0,5%

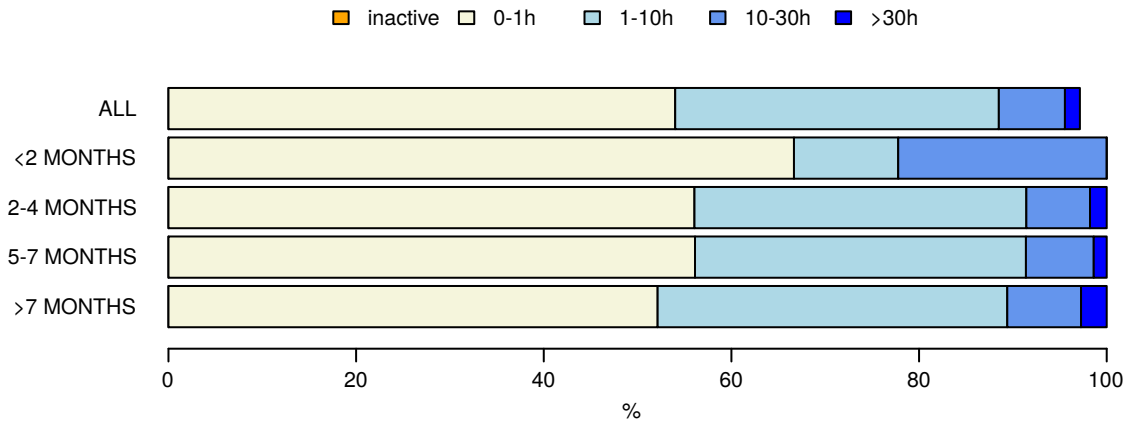


**Figure 7.** Usage of activated OLS LCs by LA1 level

### 3. Usage of OLS Language Courses by Mobility Duration

**Table 13.** Usage of activated OLS LCs by mobility duration

		Total	0h	below 1h	1h to 10h	10h to 30h	more than 30h
All	Mobility Participants	4.514	0	2.438	1.557	318	72
	%	100,0%	0,0%	54,0%	34,5%	7,0%	1,6%
<2 months	Mobility Participants	9	0	6	1	2	0
	%	100,0%	0,0%	66,7%	11,1%	22,2%	0,0%
2-4 months	Mobility Participants	899	0	504	318	61	16
	%	100,0%	0,0%	56,1%	35,4%	6,8%	1,8%
5-7 months	Mobility Participants	2.892	0	1.623	1.020	209	40
	%	100,0%	0,0%	56,1%	35,3%	7,2%	1,4%
>7 months	Mobility Participants	585	0	305	218	46	16
	%	100,0%	0,0%	52,1%	37,3%	7,9%	2,7%

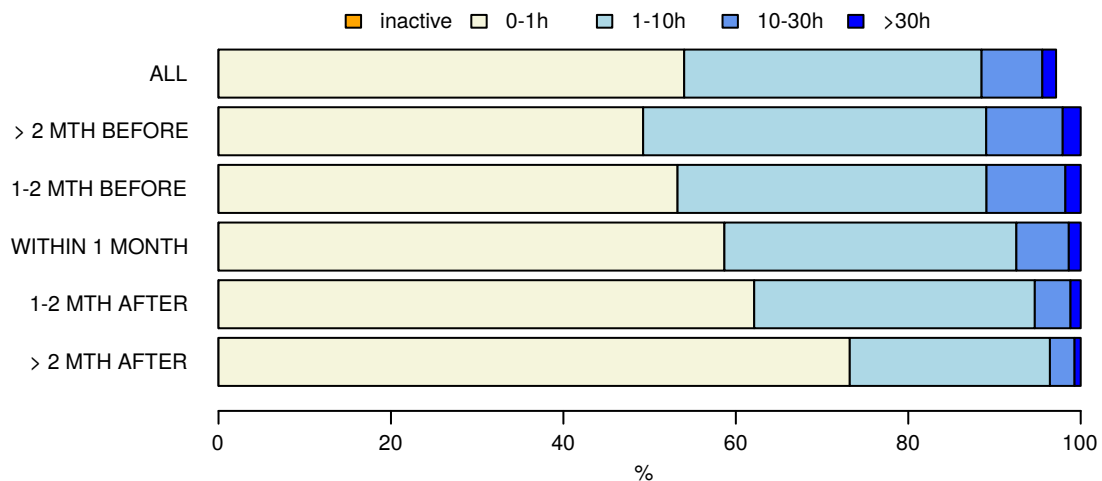


**Figure 8.** Usage of activated OLS LCs by mobility duration

#### 4. Usage of OLS Language Courses by Starting Time

**Table 14.** Usage of activated OLS LCs by the time when course use started with respect to beginning of the mobility

		Total	0h	below 1h	1h to 10h	10h to 30h	more than 30h
All	Mobility Participants	4.514	0	2.438	1.557	318	72
	%	100,0%	0,0%	54,0%	34,5%	7,0%	1,6%
> 2 mth before	Mobility Participants	1.533	0	755	610	136	32
	%	100,0%	0,0%	49,2%	39,8%	8,9%	2,1%
1-2 mth before	Mobility Participants	787	0	419	282	72	14
	%	100,0%	0,0%	53,2%	35,8%	9,1%	1,8%
within 1 month	Mobility Participants	1.447	0	849	490	88	20
	%	100,0%	0,0%	58,7%	33,9%	6,1%	1,4%
1-2 mth after	Mobility Participants	338	0	210	110	14	4
	%	100,0%	0,0%	62,1%	32,5%	4,1%	1,2%
> 2 mth after	Mobility Participants	280	0	205	65	8	2
	%	100,0%	0,0%	73,2%	23,2%	2,9%	0,7%



**Figure 9.** Usage of activated OLS LCs by the time when course use started with respect to the beginning of the mobility

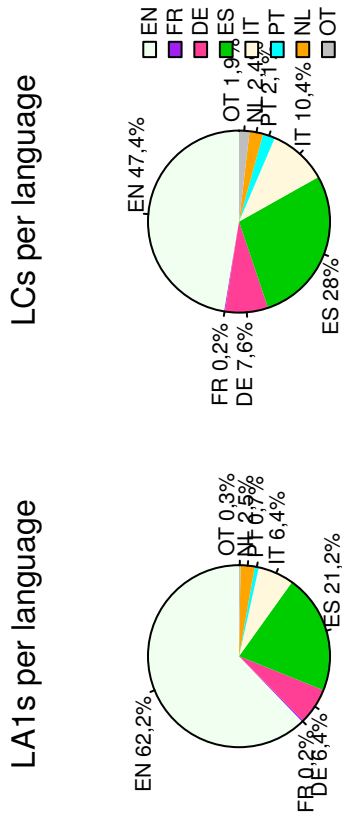
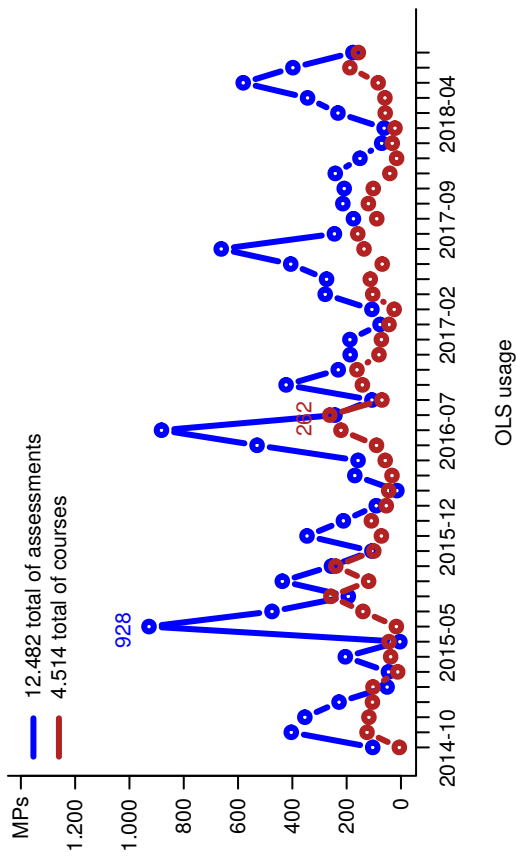
## 5. Main Language vs Local Language

The next table shows the participants' usage of the OLS language courses in the language and the local language. Beneficiaries may invite participants who have obtained a result between CEFR levels B2 and C2 in their first language assessment to follow a language course in their main language of instruction or work, or in the local language of the country, provided that this language is available in the OLS.

**Table 15.** Usage of language courses in the languages and local languages

	Total Used LC	used LC in mobility language for MPs with LA1 results B1 and less	used LC in mobility language for MPs with LA1 results B2 and more	used LC in local language
DE	344	60,8 %	20,6 %	18,6 %
EN	2.139	54,7 %	45,3 %	0,0 %
ES	1.263	87,6 %	10,1 %	2,3 %
FR	7	28,6 %	71,4 %	0,0 %
IT	471	68,6 %	19,3 %	12,1 %
NL	109	48,6 %	30,3 %	21,1 %
CS	11	9,1 %	0,0 %	90,9 %
DA	16	25,0 %	6,2 %	68,8 %
EL	1	100,0 %	0,0 %	0,0 %
PL	9	11,1 %	0,0 %	88,9 %
PT	97	60,8 %	2,1 %	37,1 %
SV	28	7,1 %	0,0 %	92,9 %
BG	0	.	.	.
FI	10	20,0 %	0,0 %	80,0 %
HU	4	25,0 %	0,0 %	75,0 %
RO	2	50,0 %	0,0 %	50,0 %
SK	0	.	.	.
HR	2	50,0 %	0,0 %	50,0 %
ET	0	.	.	.
GA	0	.	.	.
LV	0	.	.	.
LT	0	.	.	.
MT	0	.	.	.
SL	1	0,0 %	0,0 %	100,0 %
All languages	4.514	65,0 %	28,8 %	6,2 %

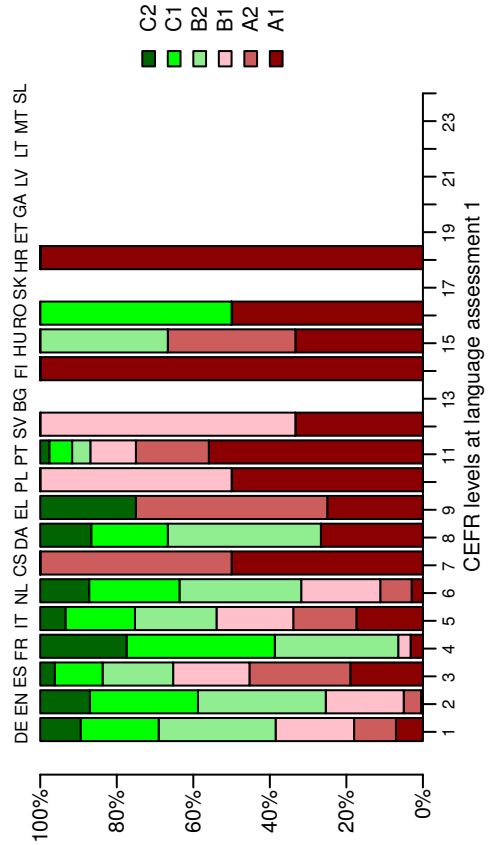
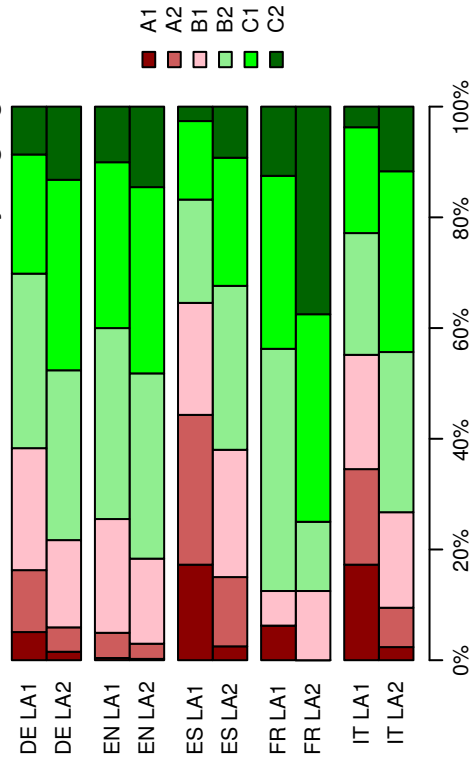
## IV. Erasmus+ OLS Dashboard



Total: 12482

Total: 4514

CEFR levels at language assessment 1 and 2 for the five most used mobility languages



## V. Glossary of Specific Terminology Used in this Statistical Report

**Used OLS language assessment:** one OLS assessment is considered used once assessment 1 has been started (trigger: access to first question of the assessment).

**Used OLS language course:** one OLS course is considered used from the first access to the language course (trigger: 1st compatibility check of the course).

**Completed language assessments (Comp LA):** refers to completed language assessments for which a result is available to participants and Beneficiaries.

**Activated language courses (Act LC):** refers to language courses for which some activity has been recorded on the OLS course platform.

## VI. Abbreviations Used in the Framework of the Erasmus+ OLS

Acronym	Phrase
1 Act LC	Active Language Course
2 BEN	Beneficiary
3 CEFR	Common European Framework of Reference for Languages: Learning, Teaching, Assessment
4 Comp LA	Completed Language Assessment
5 HE	Higher Education
6 LA	Language Assessment
7 LA1	First Language Assessment
8 LA2	Second Language Assessment
9 LC	Language Course
10 MP	Mobility Participant
11 NA	National Agency
12 OLS	Online Linguistic Support
13 VET	Vocational Education and Training
14 YOU	Youth
15 Language Groups	
16 A	German, English, Spanish, French, Italian, Dutch
17 B	Czech, Danish, Greek, Polish, Portuguese, Swedish
18 C	Bulgarian, Finnish, Hungarian, Romanian, Slovak, Croatian
19 D	Estonian, Irish Gaelic, Latvian, Lithuanian, Maltese, Slovenian

## VII. CEFR Levels

